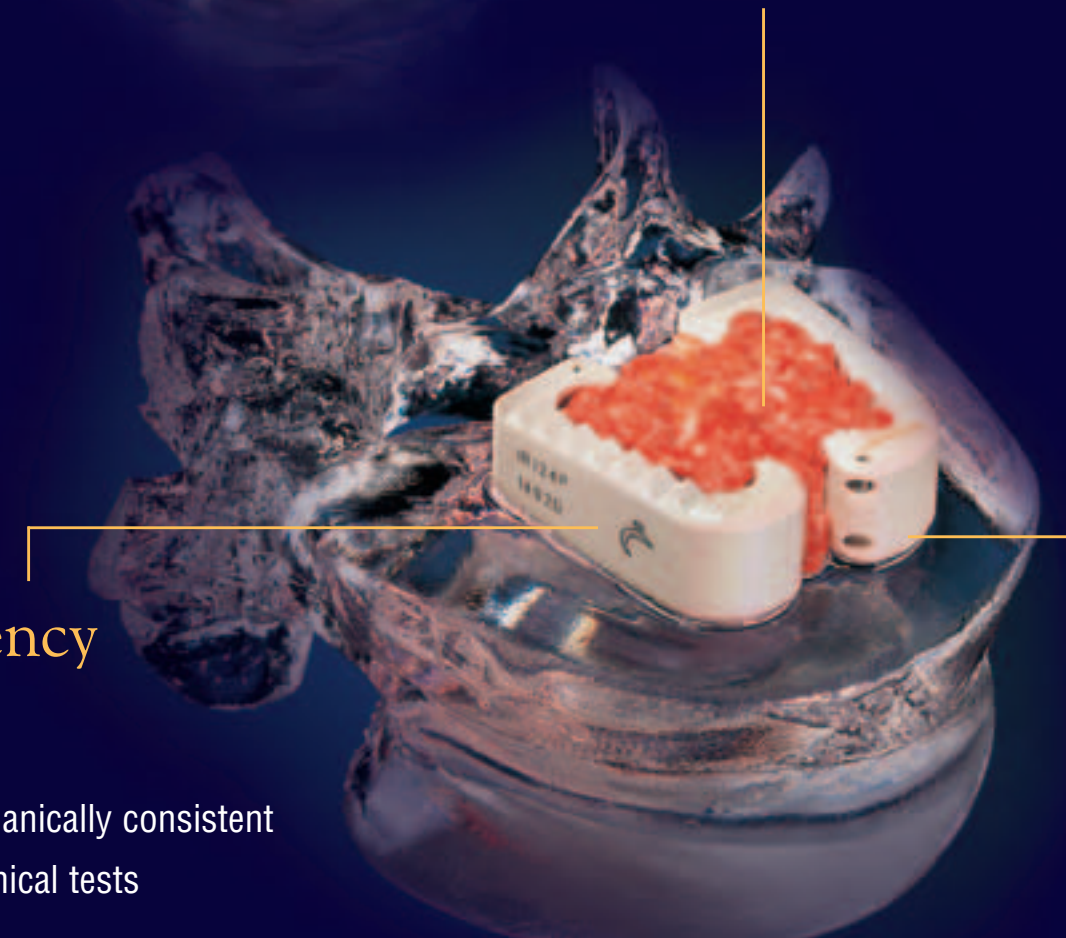


Favour grafting by creating a fusion chamber

# ROI

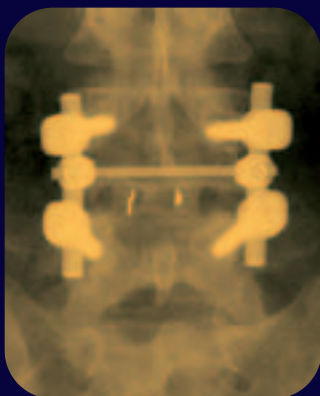
## Graft and fusion

- A vast, single grafting area
- A vast, single end-plate freshening area
- Free bone to bone contact within a single fusion chamber



## Radio-transparency and safety

- Transparency and biomechanically consistent
- Excellent results in mechanical tests



2 months post-op

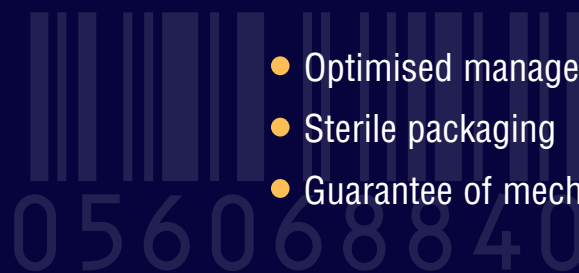
## Stability and anatomy



- A peripheral weight bearing surface outside the grafting area
- Adjustment of lordosis based on the difference on antero-posterior heights of the implant
- Maximum weight bearing area for optimum stability

## Sterility and traceability

- Optimised management
- Sterile packaging
- Guarantee of mechanical properties



**LDR**  
medical

[www.ldrmedical.fr](http://www.ldrmedical.fr)

A passion for innovation

Patented system

New exclusive concept from LDR Médical